



# *The Common European Language Data Space*

*...for the Language  
Industry*

LREC Conference 2022

22 June 2022

# Why are we here today?

A new opportunity for more **language data, tools and services** and for their **monetisation.**

EC

We will present...

- what the Language Data Space (LDS) is
- how the Language Technology Industry can benefit from it



Language Technology Industry

You can share...

- insights into your specific needs to be met in the LDS
- your thoughts on the LDS set-up and how to improve it

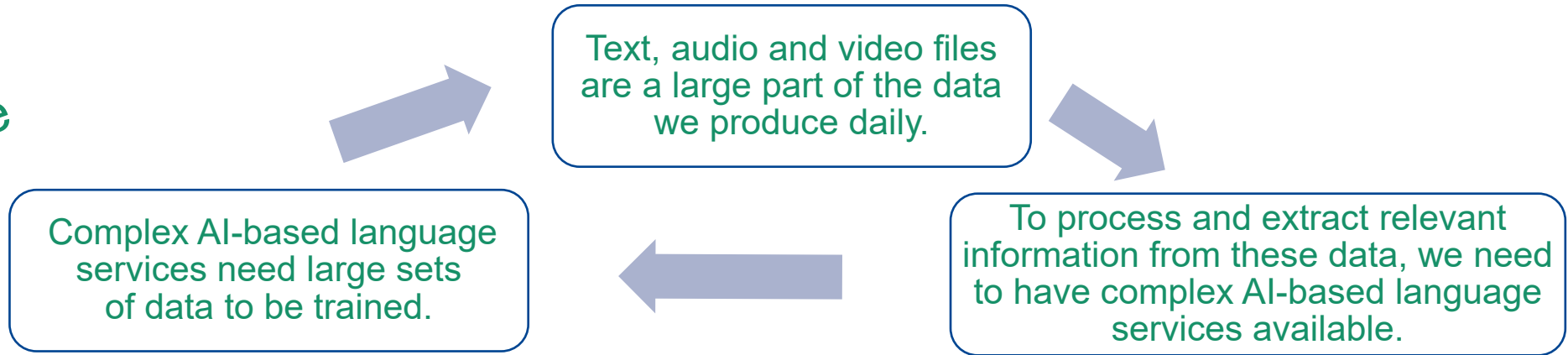
*Cross-fertilisation for a mutual gain*

# Language Data Space... What is it?

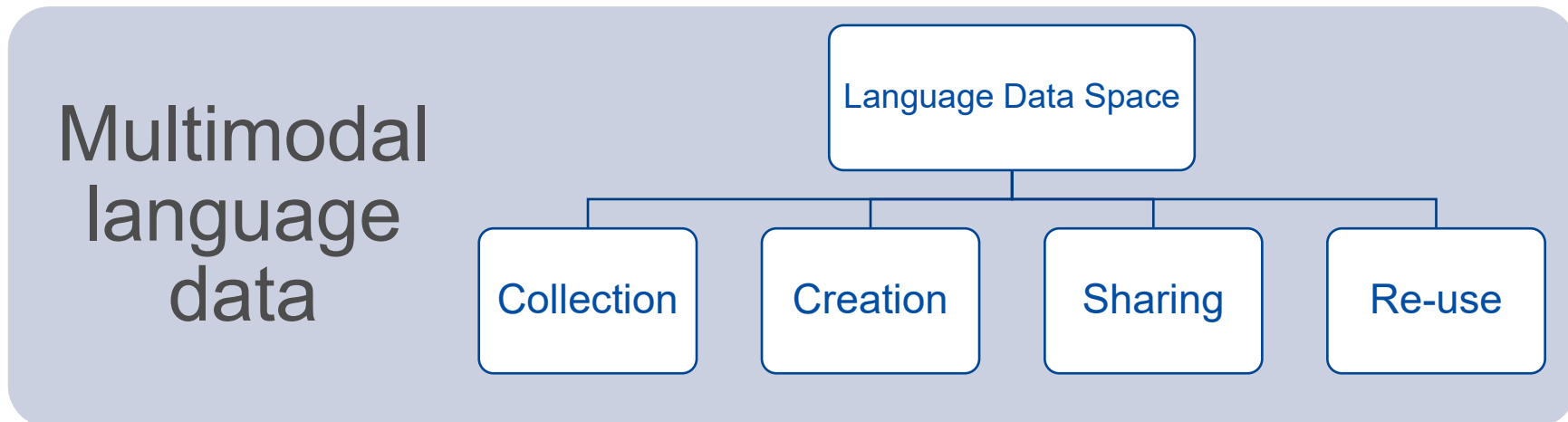
**Goal**

## Increase Data Exchange

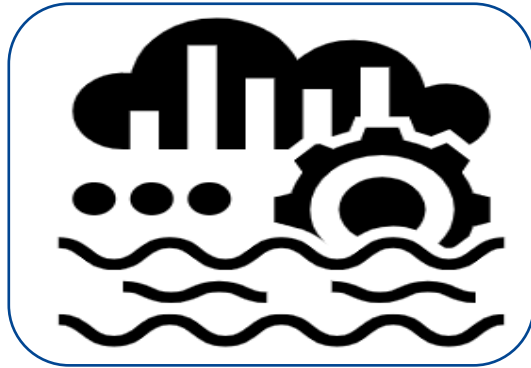
**Where we are**



**What we offer**

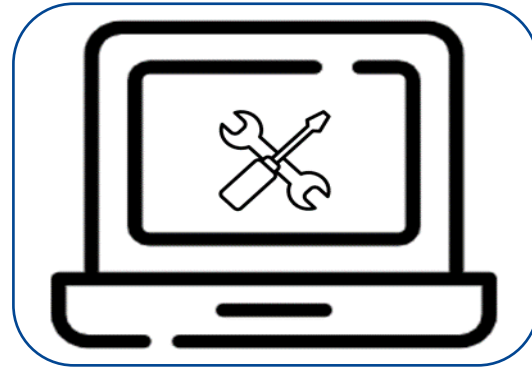


# What's in it for you



**Data sharing  
against  
remuneration**

E.g., multilingual  
and/or multimodal  
data



**Developing,  
selling and  
purchasing  
language-based  
applications,  
tools and models**

E.g., automatic  
speech  
transcription



**Developing,  
selling and  
purchasing  
language-based  
services**

E.g., automatic text  
summarisation



**Performing data  
analytics and  
further exploiting  
the market for  
more reach and  
visibility**

E.g., historical data

# Your involvement in the LDS initiative

## Short-Term Today's Meeting

- Presenting and exchanging ideas on the LDS to give further shape to the project

## Medium-Term June – September 2022

- Finding out more about the LDS (call for tenders publication)
- Taking part in (consortia) proposals

## Long-Term From January 2023 onwards

- Participating in the deployment of the LDS
- Using the LDS as a platform and marketplace
- Being part of the LDS community

# 'Origins' of the Common European Data Spaces

## Common European Data Spaces

They are meant to harness the **value of data** for the benefit of the European economy and society.

are the centrepiece of the



Objectives



## European Strategy for Data

In February 2020, it announced the Commission's vision to empower businesses, public administrations and individuals to make better decisions **through the use of data**.

The creation of EU-wide common, interoperable DSs in strategic sectors is to **overcome existing legal and technical barriers** to data sharing and, as such, **unleash the potential of data-driven innovation**.

→ More data shared in a privacy-compliant, trustworthy, and secure way.

→ **A genuine single market for data.**

# Framework Programme of DSs and LDS

The [Digital Europe Programme \(DIGITAL\)](#) provides funding for projects in five crucial areas:



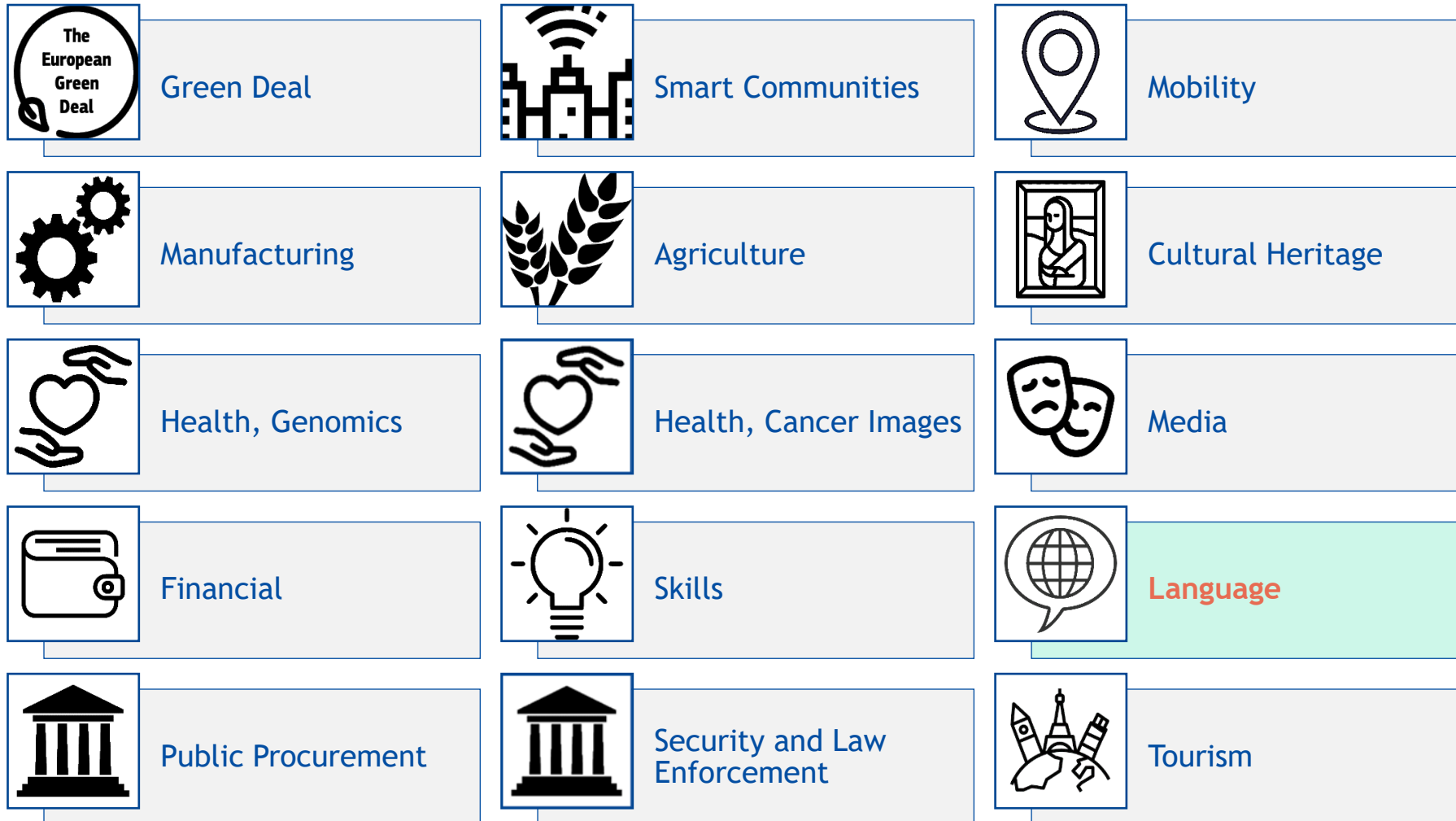
Programme VISION  
Digital Decade and digital targets for 2030.

Programme FOCUS  
Building the **strategic digital capacities** of the Union and facilitating the **wide deployment of digital technologies**.

Programme GOAL  
Bridging the **gap between digital technology research and market deployment**, while supporting the **EU twin objectives** of a green transition and digital transformation.

DSs and the LDS are under SO2 'Cloud, Data and AI', whose aim is to drive the *digital transformation* of the *public and private sectors*.

# DIGITAL WP 21-22 Data Spaces at a glance





# European DS Ecosystem – DIGITAL SO2

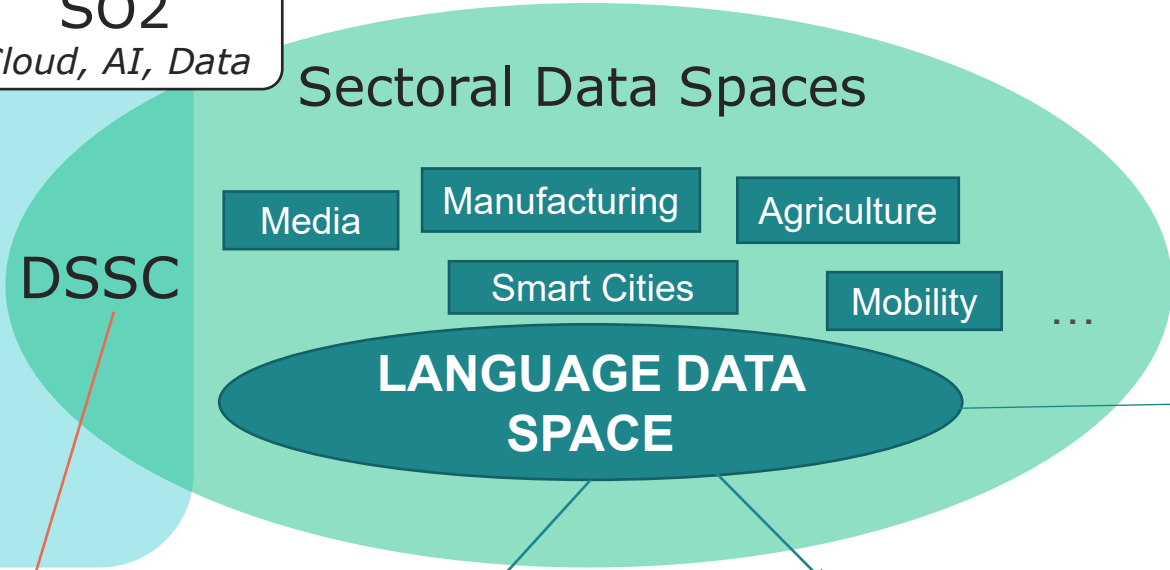
**EDBI - European Data Innovation Board**  
 supporting the EC in issuing guidelines on how to facilitate the development of DSs as well as identifying the relevant standards and interoperability requirements for cross-sector data sharing.

**SO1**  
HPC

**European Data Spaces Technical Framework**  
 consisting of  
 Cloud-to-Edge Infrastructures and Services  
 including

- Smart Middleware Solutions
- Marketplace

**SO2**  
Cloud, AI, Data



**SO4**  
Advanced Skills

**SO3**  
Cyber-security

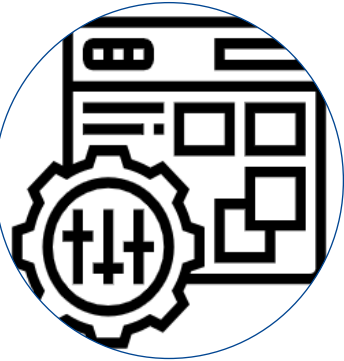
**DSSC – Data Spaces Support Centre**  
 support all relevant actions on sectoral DSs and their architectures and data infrastructure requirements available for the DSs.

**AI on-demand platform**  
 connecting providers and consumers/users of AI resources.

**TEFs – Testing and Experimentation Facilities**  
 for experimenting with AI-based solutions in real-world environments.

**SO5**  
Best use of Tech  
**Common Services Platform**

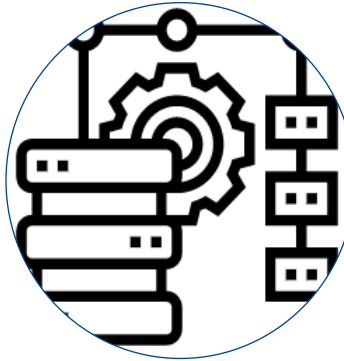
# Design Principles of the LDS



## Data control

For data holders:

- Full control over data at all times;
- Option to change data access rights over time.



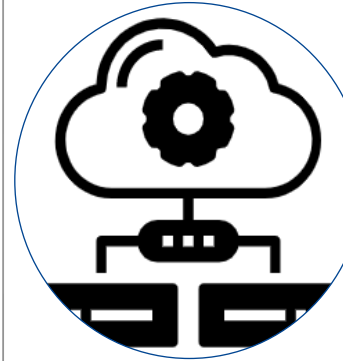
## Governance Framework

- Fair,
- transparent,
- proportionate,
- non-discriminatory access to & sharing/use of data.



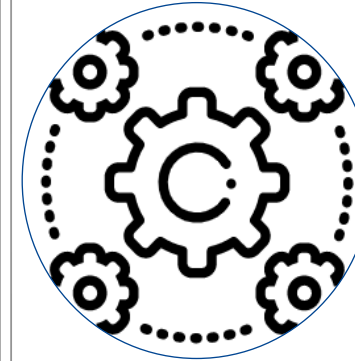
## Respect of EU Rules & Values

- Personal data protection
- Consumer protection legislation
- Competition law



## Technical Data Infrastructure

- Building blocks
- Efficient & coordinated DSs construction



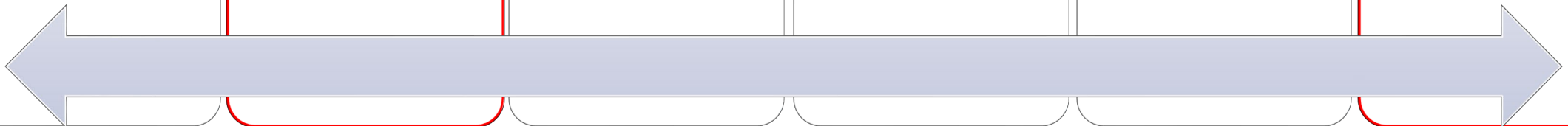
## Interconnection & Interoperability

- Progressive interlinking of DSs
- Aims:*
- Fully integrated ecosystem
  - Cross-exploitation of data



## Openness

- For all actors, organisations or individuals;
- Aims:*
- Fostering competition
  - Avoiding lock-ins



# Financing

## In DIGITAL WP 21-22

Type of Action	PROCUREMENT
Indicative Budget	EUR 6 million
Indicative Time of the Call Opening	June – September 2022
Indicative Starting Date	Early 2023

## In DIGITAL WP 23-24

Planned types of actions: *procurement & grants*.

# LDS Work Strands

1

**Establishing** an institutional Centre of Excellence for Language Technologies (**CELT**)

*Actions:*

Governance layer

→ to framework the collection, creation, sharing and re-use of **language data & models**, incl. legal aspects.

2

**Deploying** the Language Data Space

Operational layer

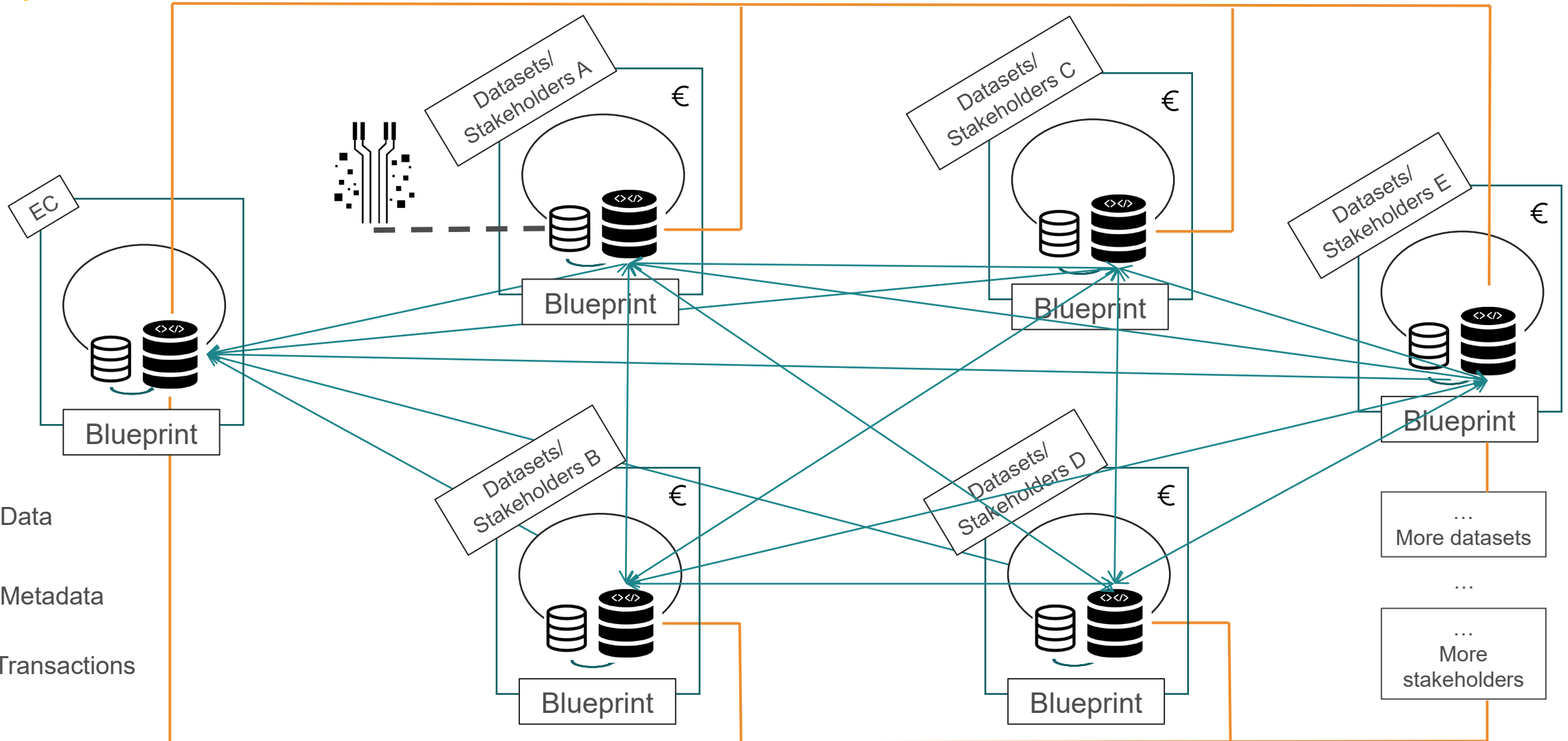
→ to implement the **architecture**;  
→ to promote the **exchange of data**;  
→ to support the deployment of **large multimodal language models** and a wide range of **AI language technology services** through the AI on-demand platform.

# Establishment of the CELT & the CELT+

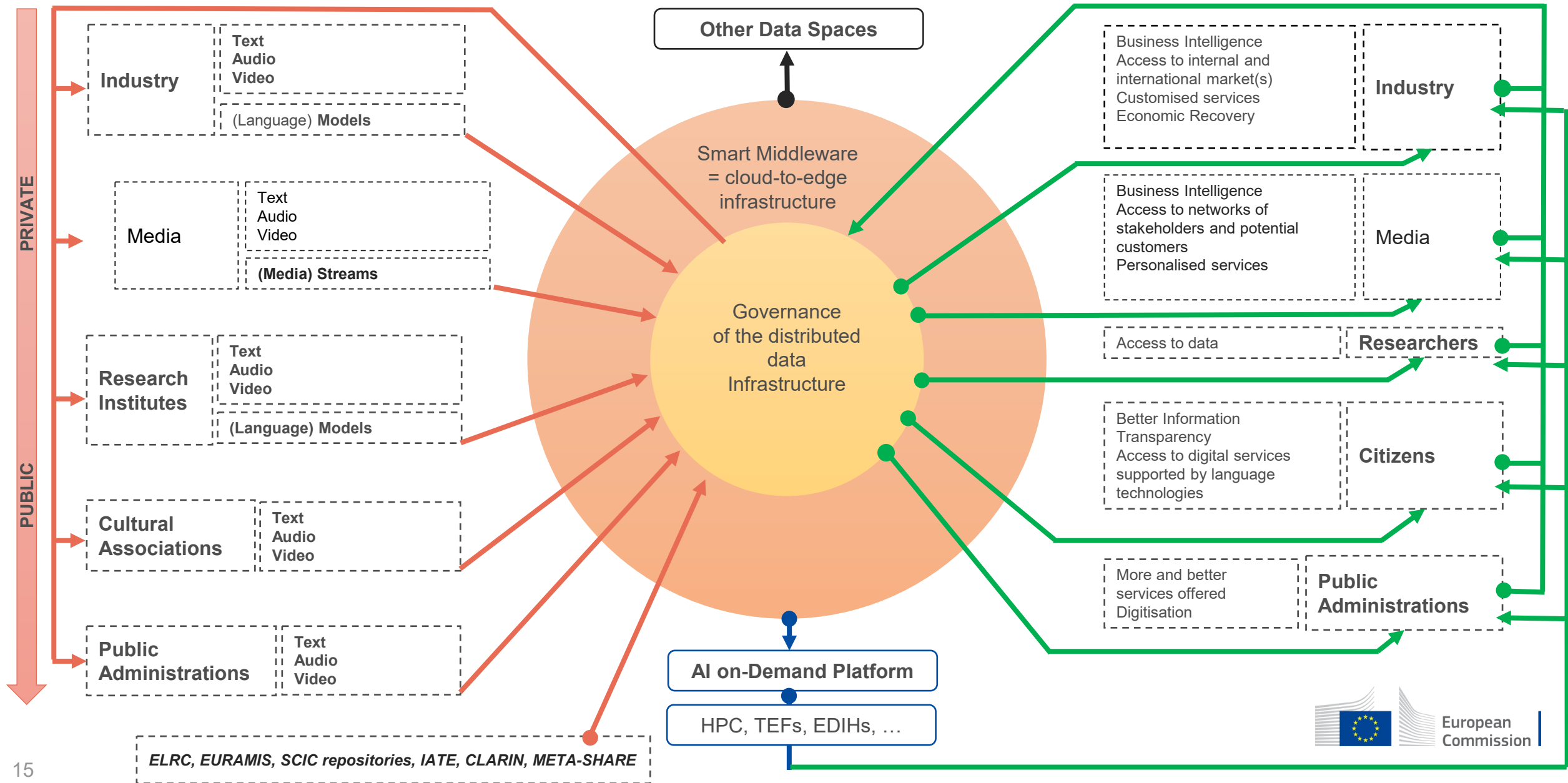
Strategic Level	<p><b>CELT</b> Coordinating across the MSs the creation and collection of multimodal language data and models.</p>	Networking	<p>Identifying and bringing together existing European <b>stakeholders/initiatives</b> and <b>language resources</b></p> <ul style="list-style-type: none"> <li>• Datasets and data streams</li> <li>• <u>Large language models</u></li> </ul> <p><i>ELRC, EURAMIS, SCIC repositories, IATE, CLARIN, META-SHARE, etc.</i></p>
		Governance	<p>Developing a <b>Multi-Stakeholder Data and Services Governance Scheme</b></p>
Operational level	<p><b>CELT+</b> Driven by Industry</p>	Planning	<p>Elaborating a <b>Blueprint for the Language Data Ecosystem</b> based on existing EU/national legislation, incl. a detailed <b>roadmap</b> on how to deploy the language data space</p>

EC Role: Facilitator

# LDS Distributed Architecture

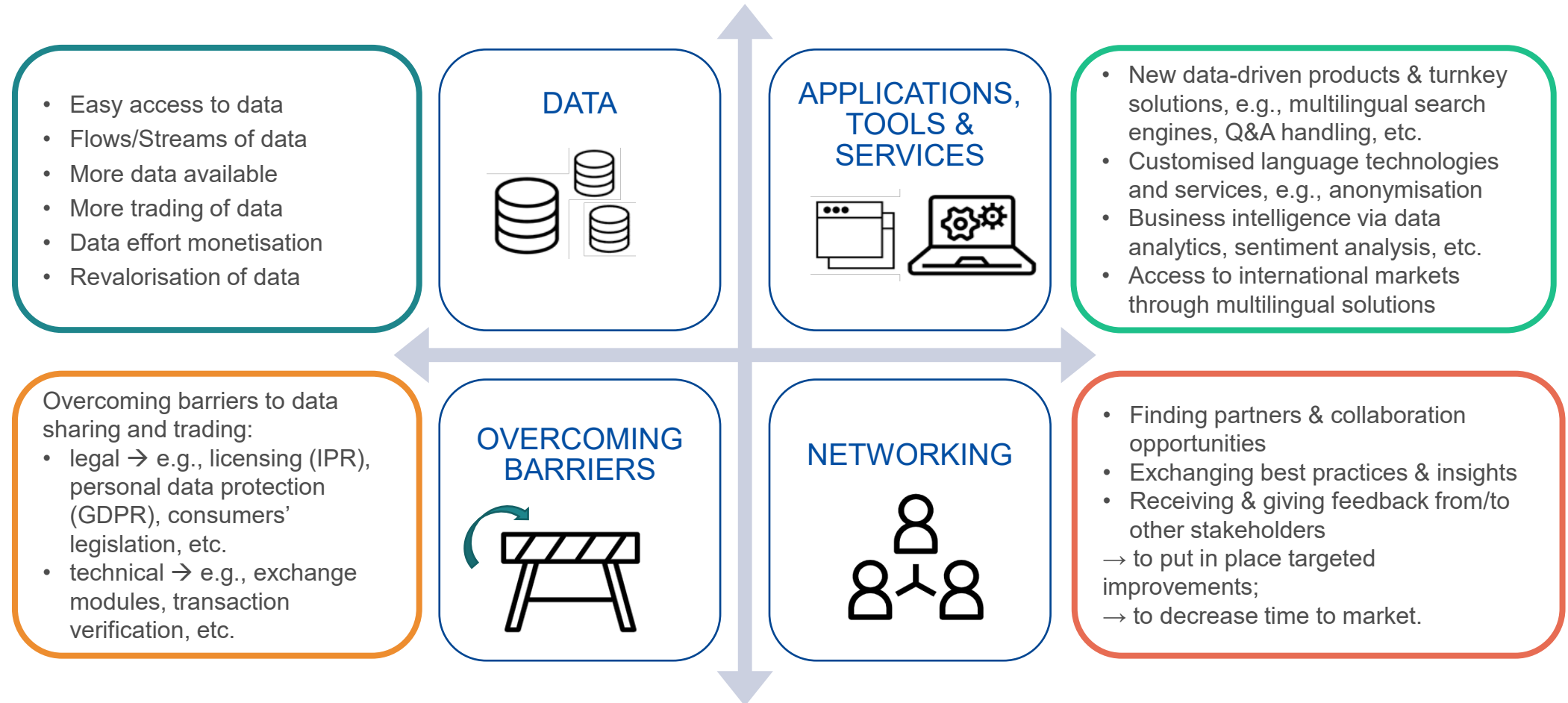


# Stakeholders' Landscape



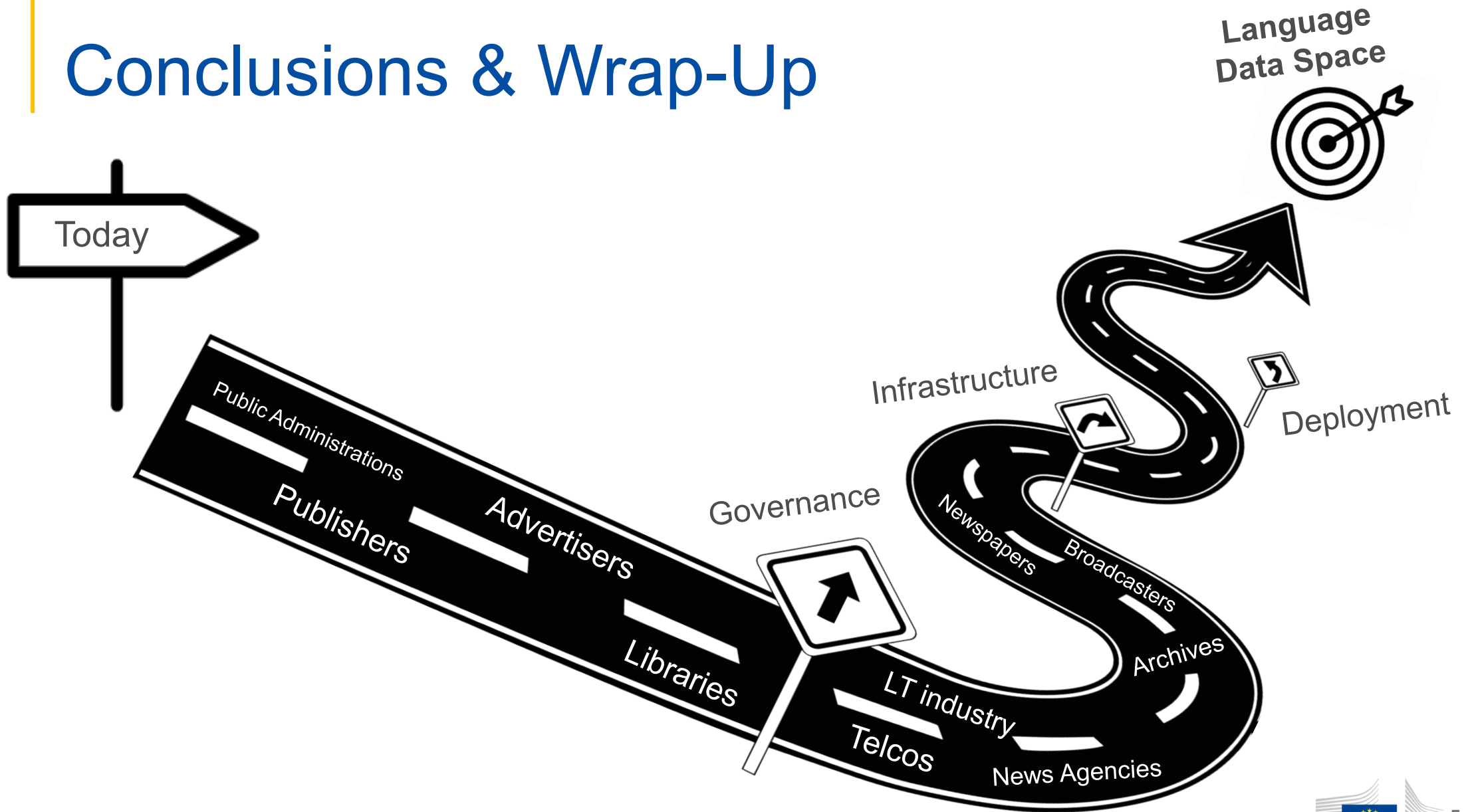
# Benefits of the LDS

The LDS has been thought to be a **platform and a marketplace** *where the request for language resources and services matches the offer.*





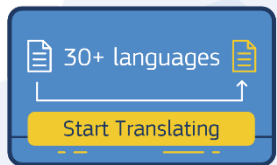
# Conclusions & Wrap-Up



# Thank you very much for sharing your ideas!



For any follow-up questions, remarks and/or queries, please feel free to send us an email at: [CNECT-LANGTECH@EC.EUROPA.EU](mailto:CNECT-LANGTECH@EC.EUROPA.EU)



eTranslation

Need eTranslation or other language tools?  
Visit: <https://language-tools.ec.europa.eu/>

